

# Mission & Vision

## VISION

To be referred as one of the most preferable supplier of all types of steel requirements in the region.

## MISSION

Our mission is to be the leading supplier by combining aggressive strategic marketing with the quality products and services at the most competitive prices for all the steel requirements.

# Mega Meter Steel Trading

---

Product E-Brochure



## MEGA METER STEEL TRADING LLC

P.O. Box # 337249,

DIC - Dubai,

United Arab Emirates.

Tel: +971 4 5532673

T.Fax: +971 4 5532673

Mobile: +97156-138 6789 \_\_\_\_\_

Email: [sales@mmsteeltrading.com](mailto:sales@mmsteeltrading.com) \_\_\_\_\_

Website: <http://www.mmsteeltrading.com>

## MM Story

---

As one of the fastest growing steel trading company in the region, MEGA METER Steel Trading L.L.C. is always committed to provide the quality products and to meet your all structural steel requirements.

At any given point of time, stock in hand is above 10,000 M. Tons and steel yard is well equipped with modern machineries to avoid handling damages in order to provide good quality of material to all the clients.

## Sources

---

All steel products are imported from various countries including UK, Belgium, Russia, Spain, South Africa, Korea, Japan, Taiwan, Turkey, Ukraine, Egypt, India, China, Saudi Arabia, Bahrain, and also from UAE's Local Manufacturers.

## What we Do Best

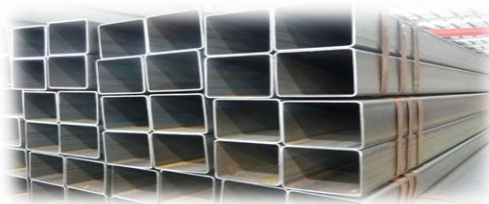
Apart from above, a strong customer support system is being introduced @ MEGA METER Steel Trading L.L.C. to ensure your procurement process shall be completed in smooth & hassle free environment which eliminates after sales issues.

As one of the leading suppliers in the region, MEGA METER Steel Trading LLC offers wide range of structural steel products includes –

## Hollow Sections (SHS / RHS / CHS)

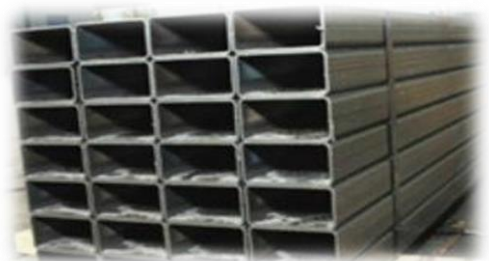
---

### SHS (Square Hollow Sections)



Sizes : upto 500x500  
Grades : EN10219, S235, 275, S355JR, JoH, J2H / ASTM Gr.A / Gr.B / Gr.C

### RHS (Rect. Hollow Sections)



Sizes: 40x20 upto 500x250  
Grades: EN10219, S235, 275, S355JR, JoH, J2H / ASTM Gr.A / Gr.B / Gr.C

### Galvanized Pipes Seamless/ERW

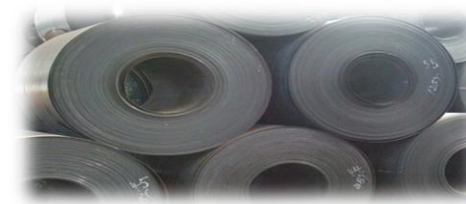


Sizes: 1/2" to 24", 1.2mm to 20mm  
Grades: ASTM A53 Gr.A/Gr.B / BSEN 10255 Class A-1, A,B,C.

## FLAT PRODUCTS

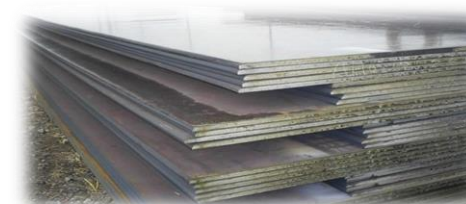
---

### Mild Steel Coils



Sizes: 1.2mm to 12mm  
Grades: St44, Gr.A36, Gr.50, S275, S355J2, SS400

### Mild Steel Plates / Sheets



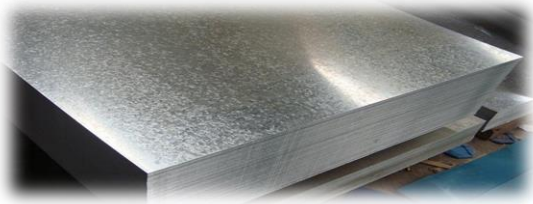
Sizes: 1.2mm to 200mm  
Grades: Gr.A36, Gr.50, A516 GR60/65/70 / S275, S355JR+N / SS400

### Galvanized Steel Coils



Sizes: 0.4mm to 4mm  
Grades: ASTM A653 / 654

### Galvanized Steel Sheets



Sizes: 0.4mm to 4mm  
Grades: ASTM A653 / 654

### UB/UC (Universal Beams/Channels) W Sections (American Wide Flange Beams)



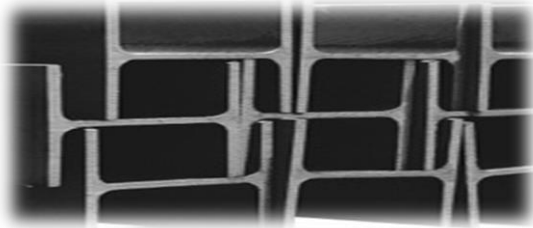
Sizes: PFC 100×50 to 430×100  
UPN/UPE 80 to 400  
Grades: EN 10025 S275JR/S355JR/J0/J2 / A572 Gr.50

### Japanese Beams/Channels



Sizes: H Beams 100×100 till 400×400  
I Beams 150×75 till 900×300  
Channels 50x25 to 380x100  
Grades: EN 10025 S275JR/S355JR/J0/J2 / ASTM A36/A572 Gr.50/A992

### HEA / HEB/IPE/IPN Sections



Sizes: HEA / HEB 100 to 1000  
IPE 80 to 750  
IPN 80 to 600  
Grades: EN 10025 S275JR/S355JR/J0/J2 / ASTM A36/A572 Gr.50/A992

### Equal Angles



Sizes: 20x20 to 250x250 - 3mm to 35mm  
Grades: S275JR / S355JR / ASTM A36 / Gr.50

### Un Equal Angles



Sizes: 40x20 to 200x150 - 4mm to 15mm  
Grades: S275JR / S355JR / ASTM A36 / Gr.50

### Round Bars



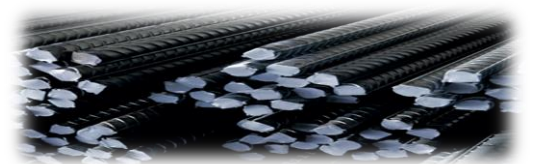
Sizes: 5mm to 300mm  
Grades: S275JR / S355JR / ASTM A36 / Gr.50

### Square Bars



Sizes: 5mm to 125mm  
Grades: S275JR / S355JR / ASTM A36 / Gr.50

### Deformed Bars



Sizes: 10mm to 50mm  
Grades: S275JR / ASTM A36

### Flat Bars



Sizes: 20mm to 300mm - 3mm to 20mm  
Grades: S275JR / S355JR / ASTM A36 / Gr.50